



Suministros Narváez S L



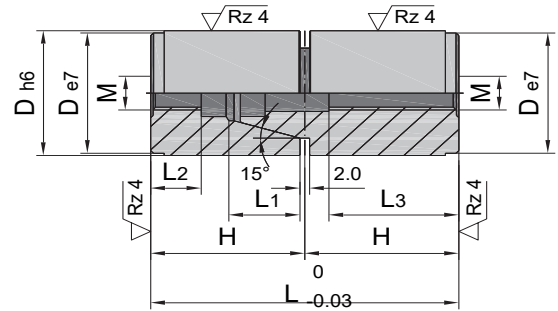
ACCESORIOS TECNICOS

Unidades Centraje-Kokus-Tirante Enclavamiento-Fechadores-
Posicionadores-Insertos Submarinos-Placas BG

UNIDADES DE CENTRAJE

Unidad Centraje JSN-051

Intercambiable por tolerancias



NEW

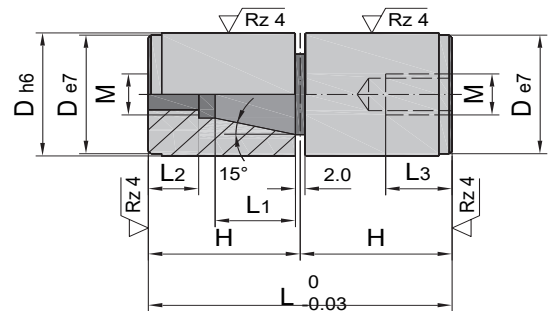
Tolerancias

Material: 1.7139 ca. 700HV

L1	L2	M	L3	H	L	D
3,7	5,0	4	11,5	12	24	10
5,0	8,5		9,6	17		12
7,0	6,0		5	12,4		14
10,0	10,5	8	19,7	27	54	16
11,0	9,0					20
						25
16,0	12,2	10	25,0	36	72	26
						30
						32
20,0	16,5		27,0	46	92	42

Unidad Centraje JSN-UC

Intercambiable por tolerancias



NEW

Tolerancias

Material: 1.7139 ca. 700HV

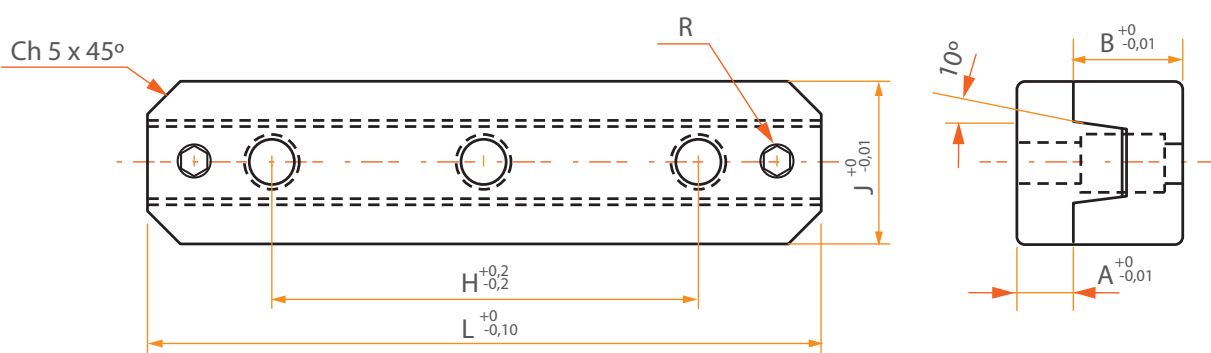
L1	L2	M	L3	H	L	D
4	9	4	10	17	34	12
6		5				14
9	11	8	16	27	54	16
10						20
14	13	10	20	36	72	25
						26
18				46	92	30
						32
						42

CENTRADOR RECTANGULAR RECTANGULAR LOCATION UNIT

CER

Material	Acero para trabajar en frio
Material	Alloy cold formed steel
Dureza caña	58 - 60 Hrc
Shaft hardness	58 - 60 Hrc
Forma de pedido	CER
Order form	CER

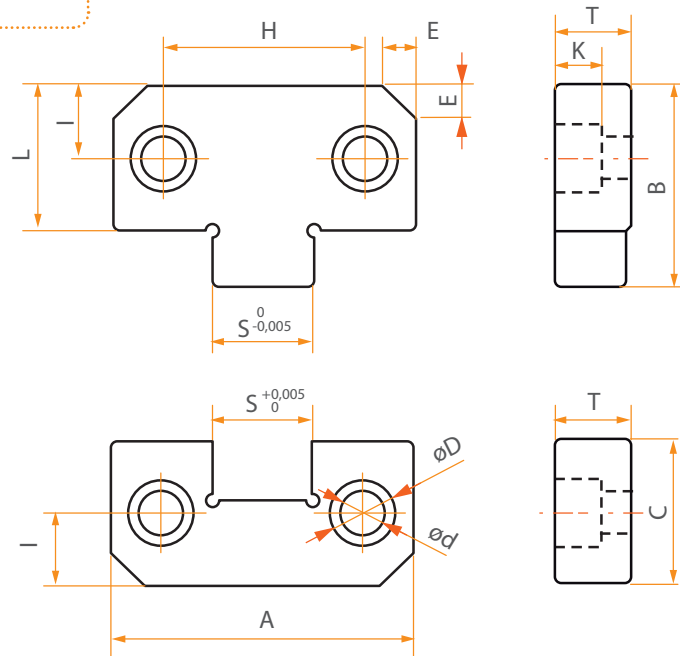
CER



TIPO	L	H	J	A	B	R
CER 50	50		25	8	17,5	M5
CER 100	100	60	30	10	22	M6
CER 150	150	100	40	13	25	M8

Material	Acero de cementacion
Material	Case hardening steel
Dureza	58 - 60 Hrc
Hardness	58 - 60 Hrc
Forma de pedido	CEL
Order form	CEL

CEL



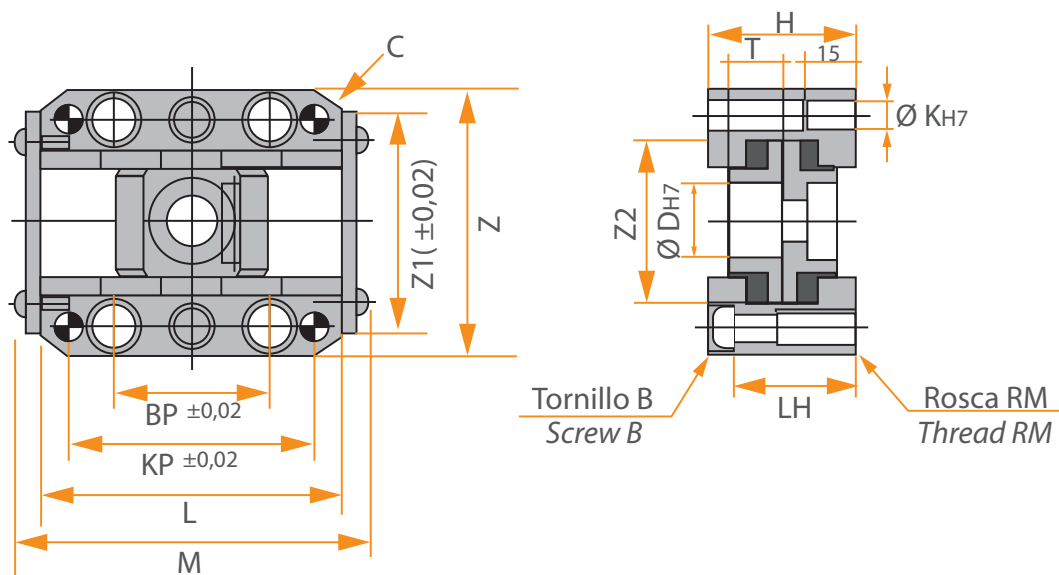
TIPO	A	B	C	T	L	S	H	I	E	D	d	K
CEL 38	38	24,6	22	13	17	15	22	7	5	9,5	5,5	5,5
CEL 50	50	30	21,5	16	21,5	17	34	11	5	10,5	6,5	8,0
CEL 75	75	50	36	19	36	25	50	18	8	16,5	10,5	12
CEL 100	100	65	45	19	45	35	70	22	10	16,5	10,5	12
CEL 125	125	65	45	25	45	45	84	22	10	16,5	10,5	12

CARRO F

CARRO PARA CORREDERA INCLINADO "F" EJECTOR CORE UNIT WITH INCLINED SLIDEWAY "F"

Temperatura máxima de trabajo	300°
Maximum working temperature	300°
Suministrable	Entre 0° y 10°
Available	Between 0° and 10°
Forma de pedido	D + Grados ángulo
Order Form	D + Angle Degrees

CARRO F



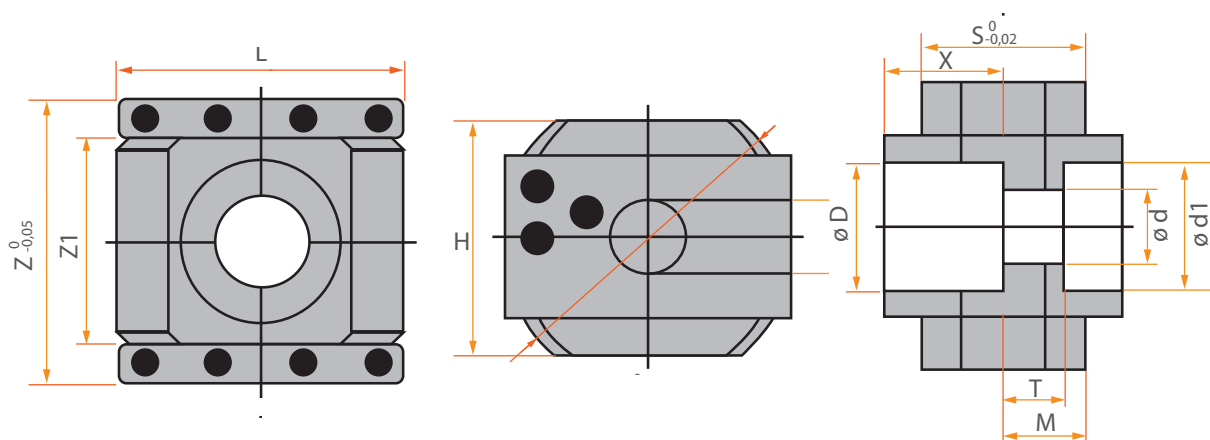
Ø D	G	Z	Z1	Z2	L	M	BP	KP	K	H	LH	S	C	B	RM	TH	T	Y	Ø R
8	12	41	33	24	44	54	12	25	4	24		13	3	M.3	M.4		8	11	6
10	14	47	38	28	50	60	16	30	5	28		17	3	M.4	M.5		8	11	8
12	18	53	42	31	60	70	20	40	6	36		20	4	M.6	M.8		10	13	10
16	20	64	50	36	70	80	25	50	6	40	33,5	24	6	M.6	M.8	73	12	15	12
20	23	76	60	43	75	85	30	55	8	46	37,5	24	8	M.8	M.10	81	15	18	12
25	24	81	65	48	85	95	40	65	8	48	39,5	26	8	M.8	M.10	88	17,5	20,5	14
30	27	88	72	55	100	110	50	80	8	54	45,5	30	8	M.8	M.10	97	19	22	18
35	30	100	80	64	115	125	50	85	10	60		34	8	M.10	M.12	103	20	23	18
40	32,5	108	88	72	125	135	50	85	10	65		38	8	M.10	M.12	112	21,5	24,5	20

PARTE DESLIZANTE DEL CARRO
PARA CORREDERA "HF"
SLIDE PART FOR EJECTOR CORE UNIT "HF"

CARRO HF

Forma de pedido D
Order form D

CARRO HF



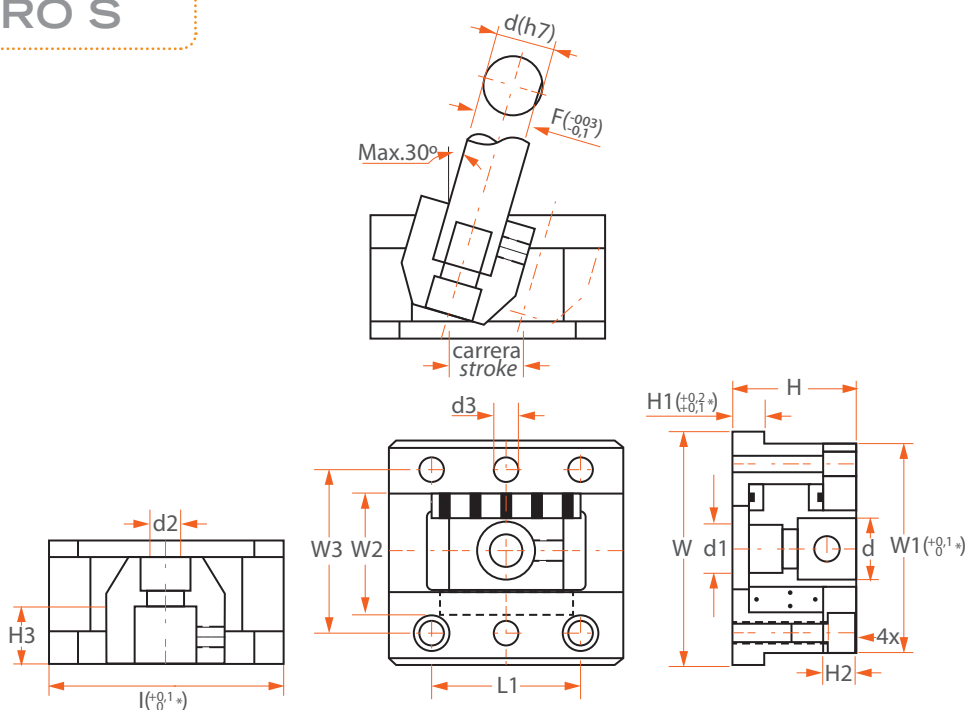
D	Z	Z1	L	S	H	C	ØR	M	d	d1	T	X	Y	Tornillos recomendados Recomm. Fixing crews
8	24	12	25	13	16	20	6	6,5	5	10	3	8	11	M4 x 10
10	28	14	32	17	16	20	8	8,5	6	12	4	8	11	M5 x 12
12	31	17	40	20	20	25	10	10	7	13	5	10	13	M6 x 14
16	36	21	45	24	24	30	12	12	9	16	6	12	15	M8 x 20
20	43	28	45	24	30	40	12	12	11	20	7	15	18	M10 x 25
25	48	33	50	26	35	45	14	13	14	25	8	17,5	20,5	M12 x 30
30	55	38	60	30	38	50	18	15	14	25	10	19	22	M12 x 30
35	64	44	70	34	40	55	18	17	14	25	10	20	23	M12 x 30
40	72	50	80	38	43	60	20	19	18	32	10	21,5	24,5	M16 x 35

CARRO S

CARRO PARA CORREDERA "S" INCLINED EJECTOR CORE UNIT "S"

Temperatura máxima de trabajo	300°
Maximum working temperature	300°
Ángulo máximo de trabajo	30°
Maximum working angle	30°
Forma de pedido	D
Order Form	D

CARRO S



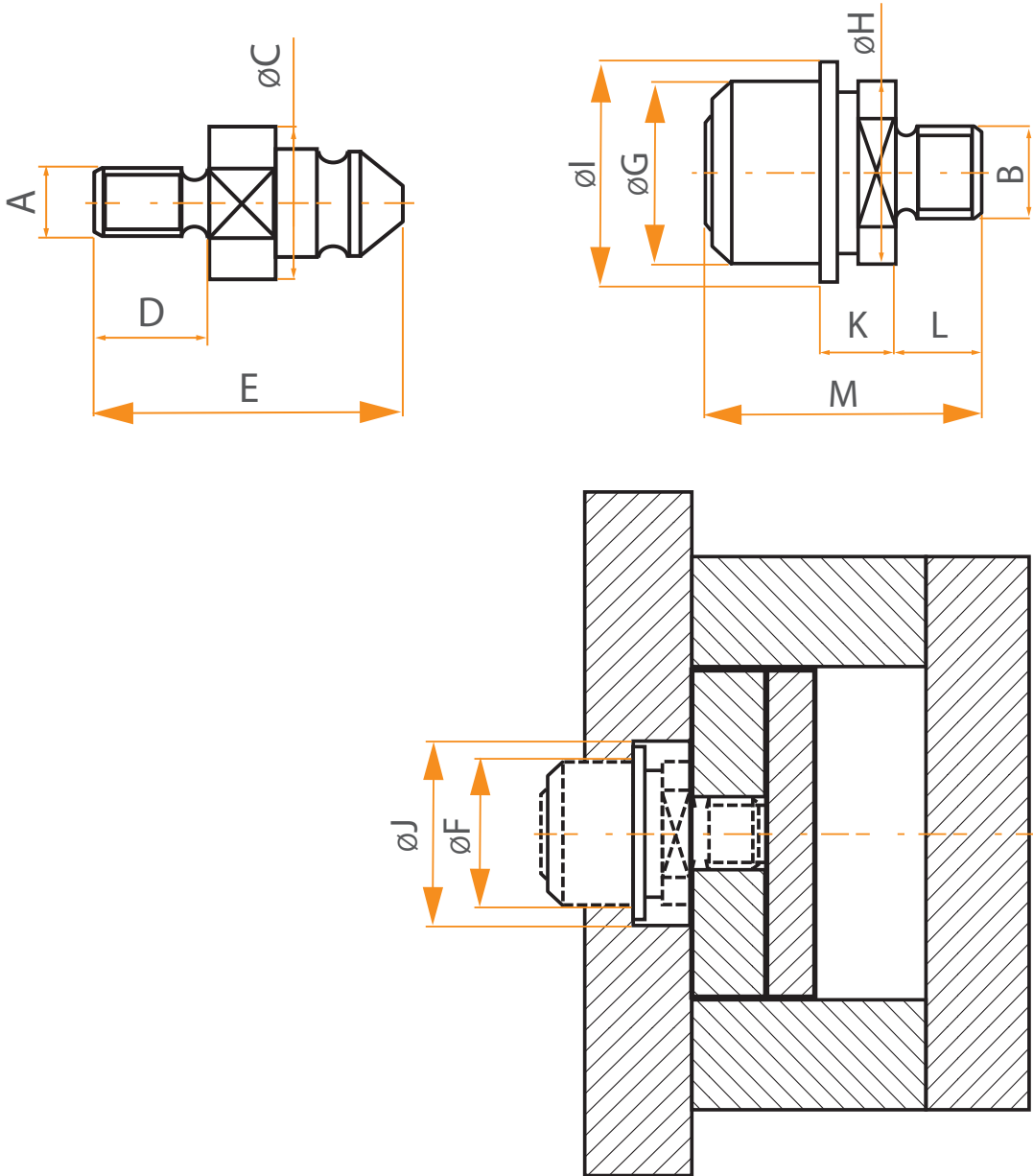
d h7	d1	d2	d3 H7	W	W1 +0,1 / 0	W2	W3	L	L1	H	H1	H2	H3 +0,02 -0,02	F -0,03 -0,1	Carrera Stroke
8	8	4,5	3	33	30	19	24	32	20	22	5	7	8	7	10
10	10	5,5	4	45	40	25	32	45	30	27	5	8	10	9	18
12	11	7	6	57	51	31	39	50	35	32	7	10	12	10	20
16	14	9	6	65	58	38	46	65	40	36	8	10	16	14,5	25
20	17	11	8	80	72	44	56	80	55	42	11	12	20	18	30
25	20	14	10	93	85	52	66	90	65	50	15	15	25	22,5	35
30	20	14	10	101	93	60	74	100	70	55	15	15	30	27	40
35	20	14	10	120	110	70	85	120	80	62	15	18	35	32	45
40	26	17,5	10	130	120	80	95	135	90	70	15	18	40	36	50
45	26	17,5	10	140	130	90	105	150	110	80	15	20	45	40	55

RECUPERACION ADELANTADA QUICK RETURN COUPLING

RA

Forma de pedido	RA TIPO/A
Order form	RA TIPO/A

RA



RA

**RECUPERACION ADELANTADA
QUICK RETURN COUPLING**

TIPO	A	C	D	E
RA301	M10	22,8	20	45,5
	M12			
	M14			
RA401	M10	25,8	20	55
	M12			
	M14			
RA411	M16	35	25	68
	M18			
	M20			
	M24			
	M27			
	M30			
RA421	M24	43	30	80
	M27			
	M30			
	M36			

DISPOSITIVO / DEVICE		
MACHO MALE	HEMBRA FEMALE	CARGA (Kgs) LOAD (Kgs)
RA301	RA302	1500
RA401	RA402	2400
RA411	RA412	3200
RA421	RA422	18000

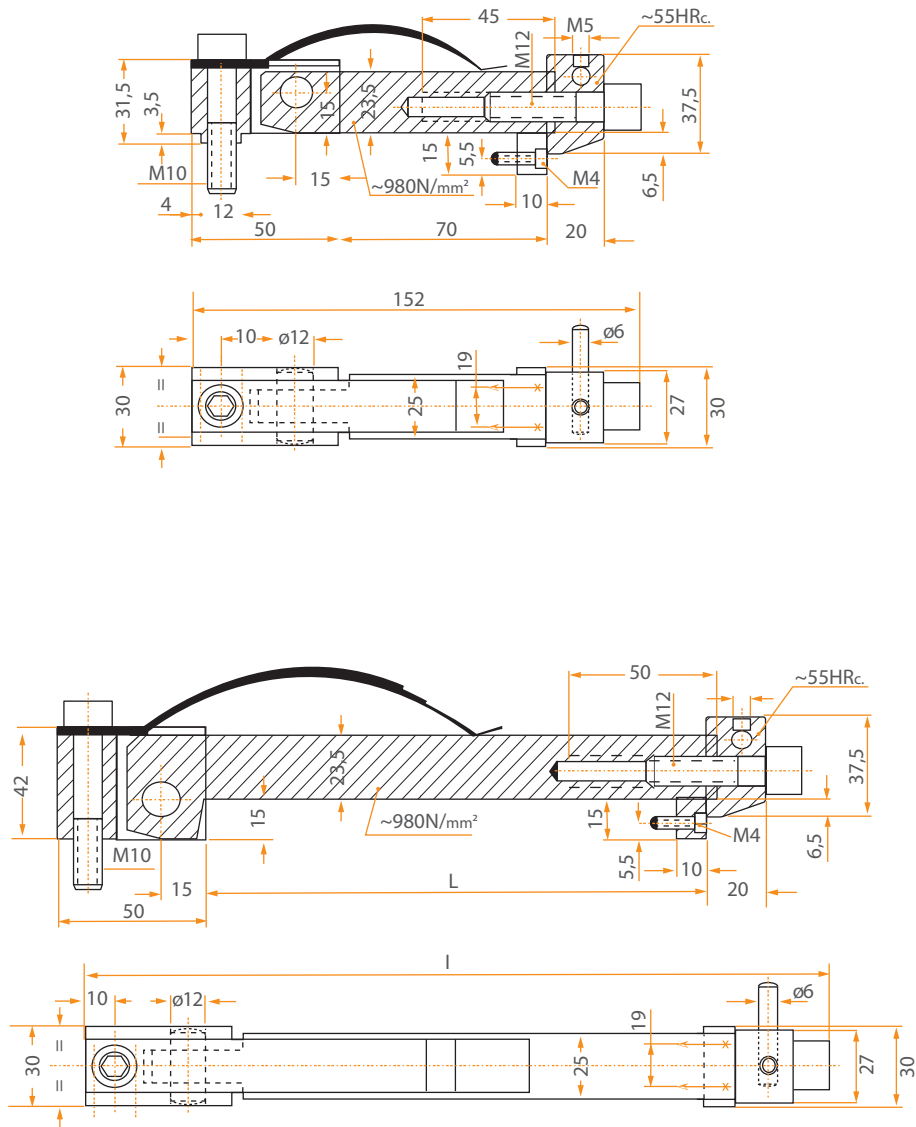
TIPO	B	F	G	H	I	J	K	L	M
RA302	M16	34	32	32	39	43	9	15	42,5
RA402	M16	40	38	38	48	53	13	15	52
RA412	M16	58	56	52	65	70	17	18	68
	M18								
	M20								
	M24								
	M27								
	M30								
RA422	M24	66	64	60	74	79	22	23	84
	M27								
	M30								
	M36								

TIRANTE DE ENCLAVAMIENTO TEN LATCH LOCK TEN

TEN

Forma de pedido	TEN / Ref
Order form	TEN / Ref

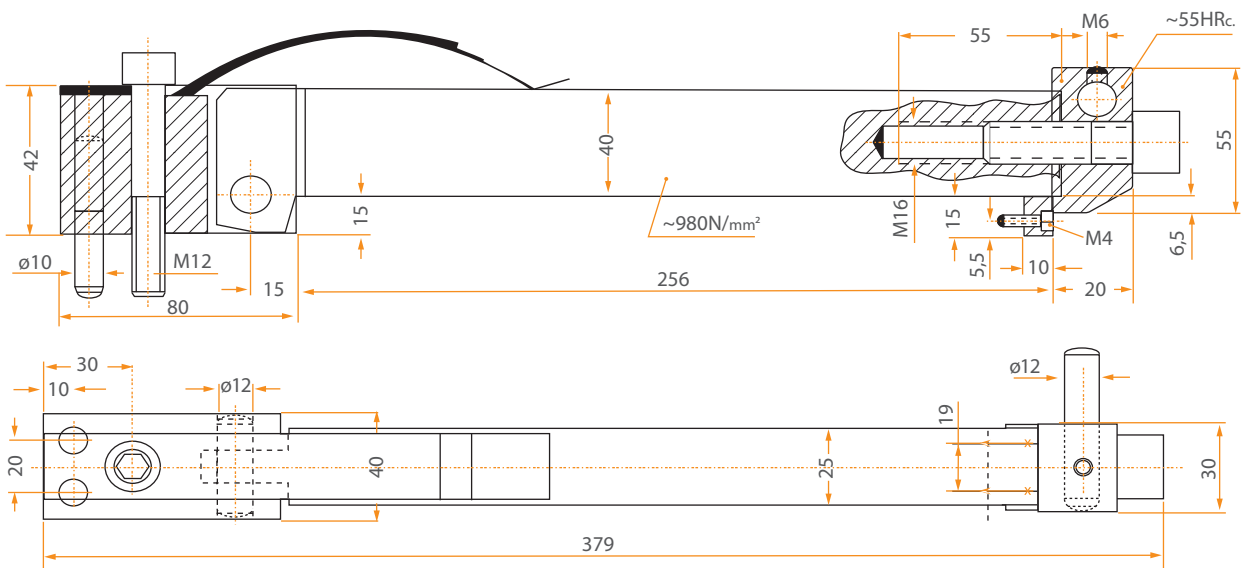
TEN



La longitud "L" es ajustable en todos los tipos.
El tirante no está templado. Puede cortarse.
Construido en acero aleado protegido contra la oxidación.
Zonas de desgaste Templadas.

Length "L" is adjustable in all types, latch lock is not hardened, can be cutted.
Made in alloyed steel protected against oxidation.
Work areas hardened.

TEN



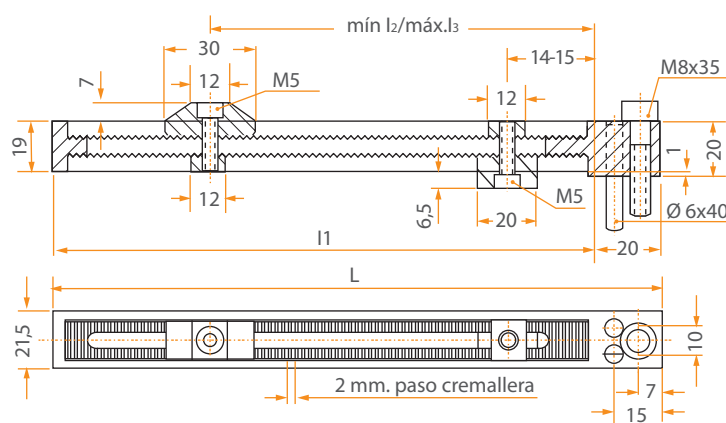
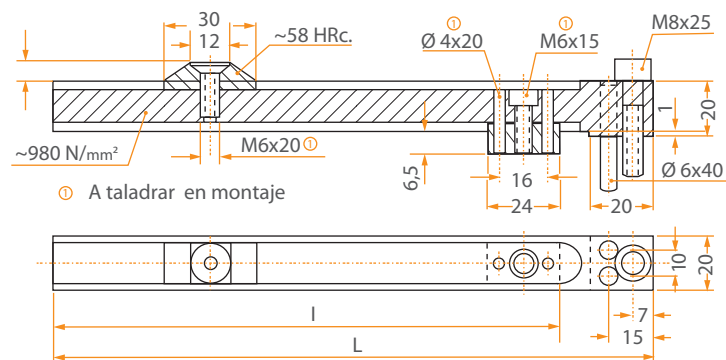
Ref.	L	I
TEN 090	90	172
TEN 170	170	252
TEN 220	220	352
TEN 270	270	352

BARRA DE LIBERACION BAFFLE BARS

BLF - BLR

Forma de pedido	BLR o BLF Ref
Order form	BLR or BLF Ref

BLF - BLR



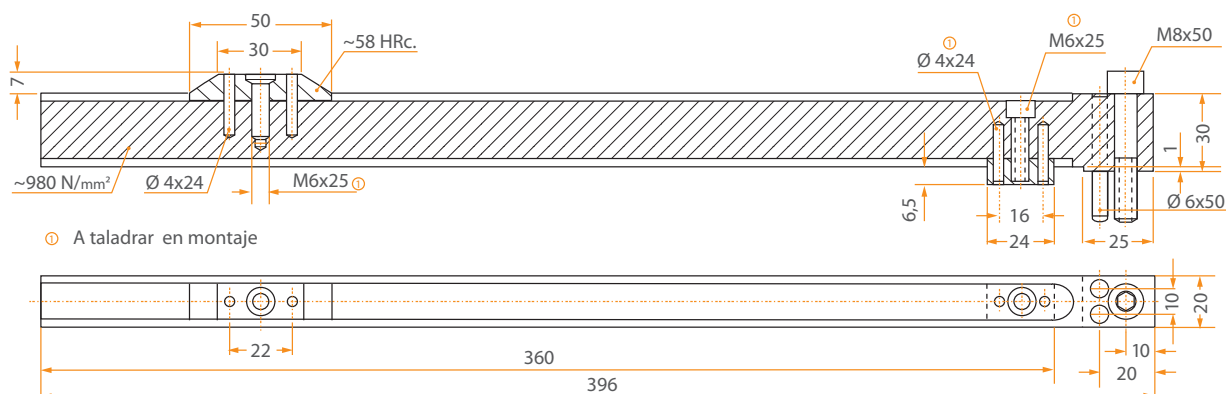
Combinan indistintamente con los tirantes Ref:

TEN 070 TEN 090 TEN 170
TEN 220 TEN 270

Combinable with Latch Locks Ref:

TEN 070 TEN 090 TEN 170
TEN 220 TEN 270

BLF - BLR

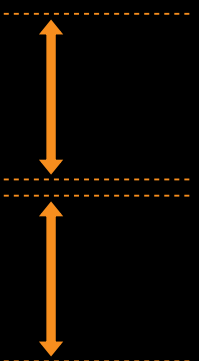
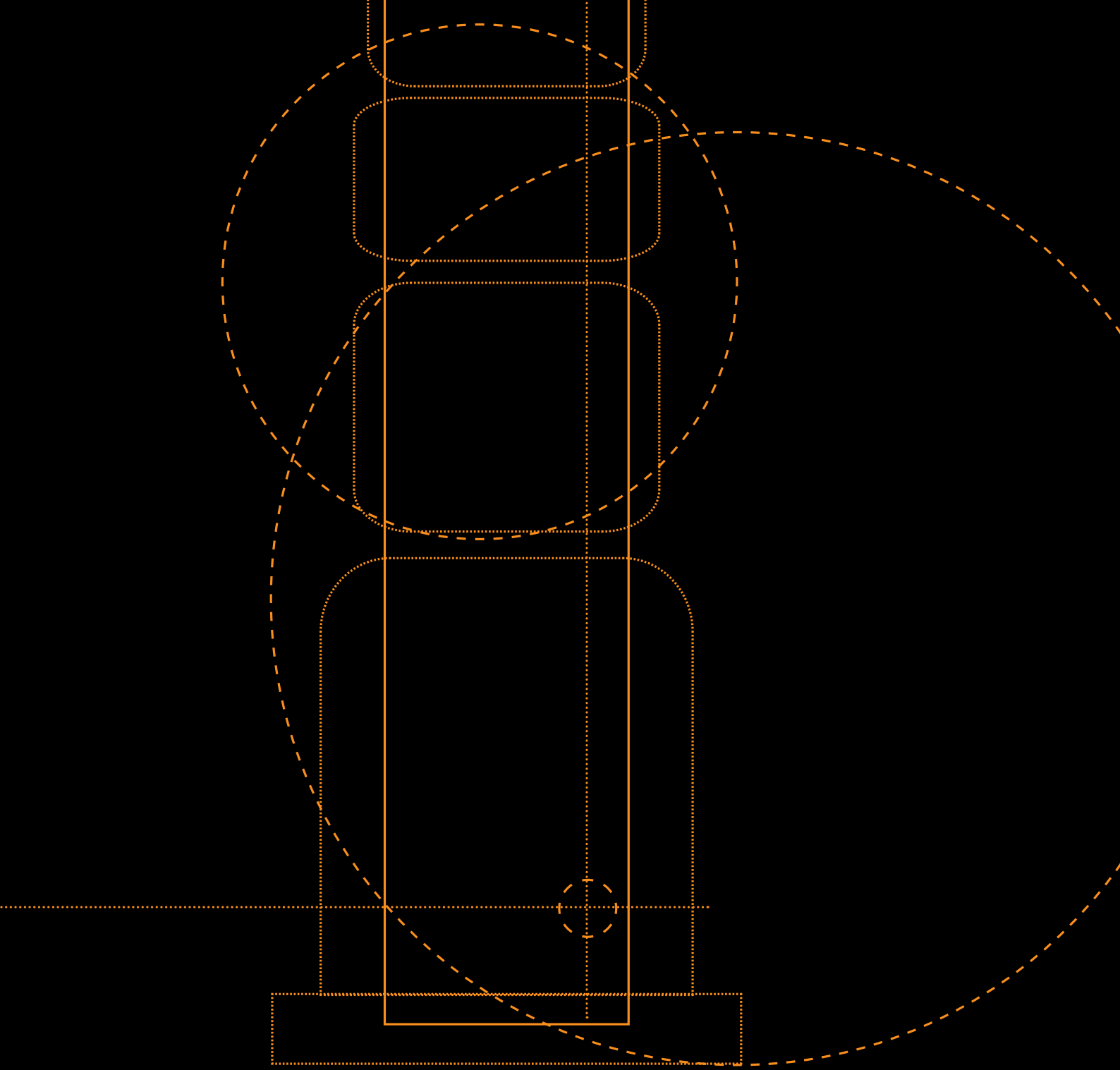


Tipo Fijo / Fixed Type BLF

Ref	L	I
BLF 200	200	170
BLF 250	250	220
BLF 300	300	270

Tipo Regulable / Regulable Type BLR

Ref.	L	I1	I2	I3	I4	I5
BLR 140	140	120	20	100	20	104
BLR 200	204	184	20	164	20	168
BLR 250	254	234	20	214	20	218



Suministros Narváez S L
C/ Albacete, 2-B
03440 IBI - ALICANTE
Tel. 622 433 425
pedidos@suminar.com

